



LED Lighting Catalogue

LUMNZ Ltd is focussed on delivering high quality LED lighting to the New Zealand market.

Our markets include: Heavy industry, Pharmaceutical, Food & Beverage, commercial and quality conscious consumers.

The long life and energy efficiency benefits of LED lighting are well known and welcomed throughout all industries and residential homes. For many unsuspecting buyers this promise may never hold true.

With advancements in LED Technology being rapid and complex there is a parallel development in current LED technology.

The result is a range of High quality / Hi-performance products versus Low cost / low quality LED products being developed. The challenge is to know what you are getting. Distinguishing between these products is often difficult as visually the products may look identical.

Many LED factories and sellers grossly overstate their longevity and performance data to compete in a market where these statements may never be tested.

LUMNZ is trusted by some of the largest and harshest industries in New Zealand to supply their lighting needs. Our technical expertise, application specific knowledge, product development and component selection sets us apart.

Our products are selected and developed on several core principles that are critical to longevity and efficiency including: Engineering: Electrical, mechanical, metallurgical and thermodynamic design are critical to high efficiency and long life.

Component selection: Understanding the design life of components and the environment that the fixtures will operate in allows us to make specific recommendations for each application to ensure the longest possible lifespan.

Efficiency: is key in large installations where the ongoing running and maintenance costs are considered. In this area LUMNZ offers superior performance in our standard products when compared to the industry average. We can offer Ultra High efficiency variants if required.

Cost is always an important factor and our aim is to provide fixtures that offer extended life and high efficiency at a cost effective price.





contents

Featured Products

LED Downlights	<i>Page No.</i>
<i>Contractor Series</i>	4 - 5
<i>Tilt Series</i>	6 - 7
<i>Platinum Series</i>	8 - 9
LED Batten	10 - 11
Plana LED Panels	12 - 13
Plana Clinical Observation Panels	14 - 15
Flood Lights <i>Thanos Industrial</i>	16 - 17
Flood Lights <i>Solis High Powered</i>	18 - 19
High Bay - Low Bay	20 - 21
Specialized Products	22 - 23

LED Downlights

Contractor Series



Range Features:

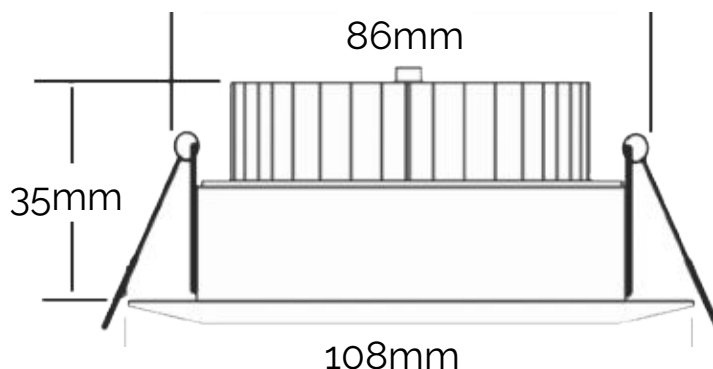
- IC-F rated
- All aluminum construction
- 120 Degree beam angle
- Dimmable
- Large terminals 4mm ID
- Captive AC terminal screws
- 300mm Long quick connect cable between light & driver
- Replaces 100W incandescent in a downlight
- 3 Year warranty

Product Overview

Ideally suited to residential or commercial applications where quality is required at a competitive price point. • Offering high lumen output with all aluminum cast casing to IP44. • Matched with a quality driver on a +300mm quick connect cable. • Large AC terminals, captive screws and connector between light and driver makes installation quick and easy. • Flush lens option offers wide spread of light while reducing glare. • For better heat dissipation and longer LED & Driver life the driver is separated from luminaire. • A quality driver with large AC terminals makes installation easy while providing great dimming and long life.

Contractor Economy Downlights Specification include:

- Quality Economy range
- 3-year warranty
- Interchangeable face to suit your lifestyle
- Dimming driver included
- Full NZ Compliance
- Separate driver and light allows for cooler components and longer life
- Separate driver and light allows for easy installation





Technical Data:

Total Wattage	11 Watts	
Color	Warm White - 3000K	Daylight - 5000K
Lumen	820 Lumen	850 Lumen
Beam Angle	120 Degree	
Color Rendition (CRI)	>80	
Cutout	Min 86mm	Max 104mm
Outer Trim Size	108mm	
Height	36mm	
Approx. Lamp Life	>40000 Hours	
IP Rating	IP44	

Ordering Information:

DL100-W3D	White Trim – Warm White light	Dimmable
DL100-W5D	White Trim -Daylight light	Dimmable
DL100-S3D	Silver Trim – Warm White light	Dimmable
DL100-S5D	Silver Trim -Daylight light	Dimmable

LED Downlights

Tilt Series



Range Features:

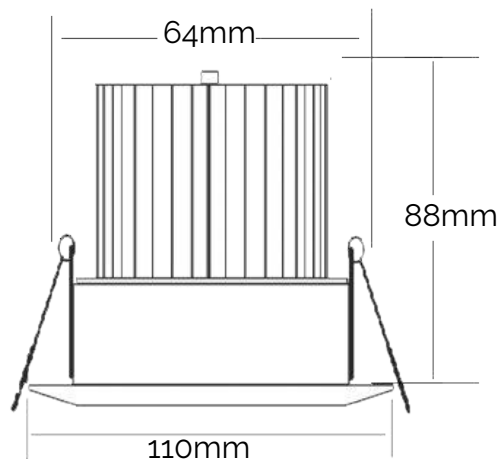
- IC rated
- All aluminum construction
- 60 Degree beam angle
- Dimmable leading or trailing edge dimmers
- Large terminals 4mm ID
- Captive terminal screws
- 300mm Long quick connect cable between light & driver
- Provides more light than 50Watt halogen
- 3 Year warranty

Product Overview

Designed for residential or commercial applications, including Existing Halogen Replacement, task lighting or spotlight applications. • Offering high lumen output in energy efficient design. • Superior Dimming with all major NZ Dimmers. • 60 Degree lens offers superior light distribution and good cutoff angles to provide glare free lighting. • Quick connect lead is +300mm long to enable easy driver placement above insulation. 40 Degree tilt allows for directional lighting. • A quality long life driver with large AC terminals makes installation easy while providing great dimming and long life.

Tilt Series Downlights Specification include:

- Quality economy range
- 3 Year warranty
- Dimming driver included
- Full NZ compliance
- Separate driver for easier installation and longer driver life





tilt series

Technical Data:

Total Wattage	12 Watt	
Color	Warm White - 3000K	Daylight - 5000K
Lumen	830 Lumen	850 Lumen
Beam Angle	60 Degree (others available on request)	
Color Rendition (CRI)	>80	
Cutout	Min 68mm	Max 91mm
Outer Trim Size	110mm	
Height	62mm	
Approx. Lamp Life	40000 Hours	

Ordering Information:

DLT100-W3D	White Trim - Warm White light	Dimmable
DLT100-W5D	White Trim -Daylight light	Dimmable
DLT100-S3D	Silver Trim - Warm White light	Dimmable
DLT100-S5D	Silver Trim -Daylight light	Dimmable

Platinum Series LED Downlights

Superior Quality



Range Features:

- Extra long Life > 60 000 hours light and driver
- Superior quality construction
- Superior thermal management
- High quality components throughout
- Perfect for retrofit applications without adapter plates.
- Full aluminum construction - extruded heat-sink
- Superb dimming driver compatible with all NZ dimmers.
- DALI Dimming available.
- Standard CRI ≥80 standard
- High CRI >90 available ex stock in NZ.
- IP44 plus hermeticly lens seal
- Quality white paint finish or anodized silver
- Zero clearance
- Low heat-sink profile
- 5 Year warranty including while in commercial use

Product Overview

A premium product designed to be a superior LED Downlight. • All aspects of this light is focused on quality and longevity. • The result is a top of the line LED Downlight suitable for high end residential, commercial and quality conscious clients. • For the installer design features give rapid installation with the confidence that you have installed the best quality light and call backs to replace faulty lights is virtually eliminated.

Platinum Series Quick Install Features Include:

- Extra-long connection cable between light and driver
- Secure connector
- XXL AC Connection terminals will accept 2.5mm looped cable easily
- Captive screws – no more lost screws
- Robust terminal block electric screw driver safe
- Large terminal screws
- Screw-less terminal cover



XXL Terminal Block
Captive screws



Technical Data:

Model	DL90	DL106	DL120	DL140	DL160
Trim Size (mm)	91	106	120	139	158
Min Hole size (mm)	76	92	104	118	118
Depth (mm)	67	66	63	59	59
Lumen Average (Lm)	670	820	870	1150	1150
Total Wattage (W)	9	11	11.5	12.5	12.5
Lamp Wattage (W)	7	8	9	10	10
Rating	IC-F / IC-4	IC-F / IC-4	IC-F / IC-4	IC-F / IC-4	IC-F / IC-4

Order code example:

DL90	W	3	D
Downlight 90mm Trim	White Trim	3000K	Dimmable

CCT Available:

3000K, 4000K & 5000K standard 4000K High CRI >90

DL90	DL106	DL120	DL140	DL160
DL90-W3D	DL106-W3D	DL120-W3D	DL140-W3D	DL160-W3D
DL90-W5D	DL106-W5D	DL120-W5D	DL140-W5D	DL160-W5D
DL90-S3D	DL106-S3D	DL120-S3D	DL140-S3D	DL160-S3D
DL90-S5D	DL106-S5D	DL120-S5D	DL140-S5D	DL160-S5D

Ultra Slimline Linear LED Lights

Product Overview

Designed specifically to replace existing T8 and T5 single and double tube fittings with a similar mounting arrangement. Upgrading to LED Has never been easier or more cost effective. Slim-line fittings provide a crisp modern fitting where and industrial solution is not desirable.

Slimline Linear LED Lights Features Include:

- At 30mm high these have a low profile and looks great in all working environments including office spaces, residential laundries, garages and pantries.
- These fittings offer clean lines and mount flush to the wall or ceilings.
- Light distribution is excellent through the diffused lens.
- Hi Output Slim-line is an ideal replacement for traditional 4/5ft t fittings in offices and residential applications.





Technical Data:

LED Slim line

IP Code: 20	IP21	
Driver:	Internal IC Driver	
Beam Angle:	120±5Degrees	
Operating Temp:	-20~+45 Degrees Celsius	
CCT:	4000K	Stocked
	5700K	Stocked
	2700K 3000K 5000K 6500K	Indent / Project

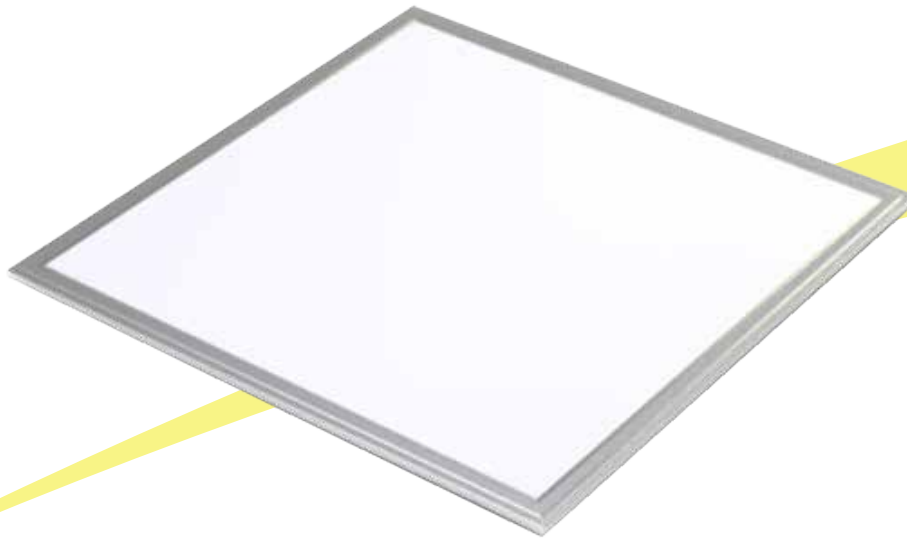
Please select only 1 of 4K or 6K in part Number

Ordering Information:

Item	Watt	CCT	Lumen	Size
BTG2-1200-40W-(4K/6K)	40W	4000K	3550lm±10%	1180*80*32mm
		6000K	3600lm±10%	
BTG2-1200-40W-(4K-6K)	60W	4000K	5300lm±10%	1480*80*32mm
		6000K	5400lm±10%	

Plana LED Panels

Toffer Replacements



Product Overview

Replacing fluorescent troffers is quick and simple with Plana LED Panels. Many variations can be tailored to suit any budget or technical specification. Offering the highest levels of design and manufacturing down to high quality budget options. • Plana is fully certified to AS/NZS standards including the driver and panel as a system. • Platinum (PLP) panels offer the ultimate in quality and engineering design. • Designed and built to meet the highest specification in relation to a few core principles.

This is not a budget series.

Core design principles:

- Ultimate Longevity
- Overall Efficiency
- Quality user experience including.
 1. Flicker Free Certification
 2. Superior Uniformity across the panel
 3. Accurate color rendering
 4. Tight CCT binning
 5. Wide voltage driver – Suitable for less stable power supplies
 6. Extra low lumen decline design
 7. Full 5 year warranty 24/7 operation design.
 8. 3mm PMMA LGP.
 9. High Density LED.
 10. True >100lm/W system efficacy.
- Output is true 100lm/W including the driver.



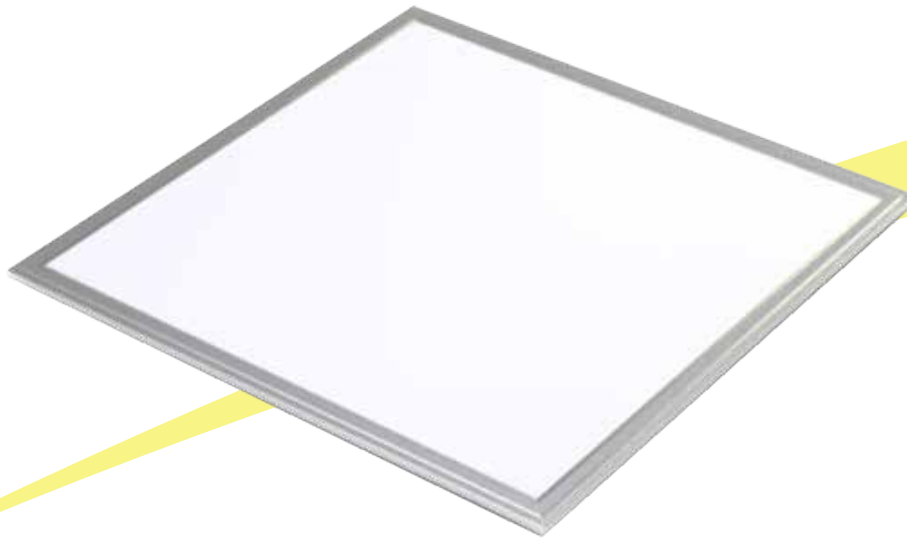
plana panels

Ordering Information:

Part Number	Size	CCT (K)	Wattage Stocked	Luminous Flux (LM)	CRI (Ra)	Luminous Efficiency (lm/w)	Input Wattage (V)
PLP-6060-40W-840	595*595*10	4000K	40	≥ 4000	>80	≥100 Entire System	AC200-240V PF≥0.9
PLP-6060-40W-860		6000K	40	≥ 4000			
PLP-30120-40W-840	295*1195*10	4000K	40	≥ 4000	>80	≥100 Entire System	AC200-240V PF≥0.9
PLP-30120-40W-860		6000K	40	≥ 4000			
PLP-60120-60W-840	595*1195*10	4000K	60	≥ 6000	>80	≥100 Entire System	AC200-240V PF≥0.9
PLP-60120-60W-860		6000K	60	≥ 6000			

Plana Clinical Observation Panels

Cyanosis Observation certified



Product Overview

Clinical observation has always been an important part of medical diagnosis. One important aspect of clinical observation is the reliable detection of cyanosis, that is, the bluish discoloration in the skin and mucous membranes, which indicates that oxygen levels in the blood are dangerously depleted. While pulse oximeters are used in operating rooms and recovery areas, there are areas within hospitals where these are not universally used and there are some medical conditions, for example where patients have poor peripheral circulation, which can make their use unreliable. In these instances, the ability of medical staff to reliably detect the onset of cyanosis by visual observation may be critical to a patient's wellbeing

CYANOSIS LED PANELS offer a superior fully certified solution for medical lighting to achieve compliance with **AS/NZS 1680.2.5:1997**.



Accredited for compliance with ISO/IEC 17025.
The results of the tests, calibrations and / or measurements included in this document are traceable to Australian / national standards.
Accreditation No. 2258.

Features Include:

- CRI > 95Ra – Standard requires > 90Ra
R9 = 94
R12 = 79
- COI < 1.3 – Standard requires < 3.3
- Compliance with AS/NZS 1680.2.5:1997
- CCT customisable between 3300K – 5300K (typical 4000K)
- IP44
- Flicker free
- Low THD
- Total Efficiency 83-93lm/W (CCT & Wattage Dependant)
- Low UGR < 19





Ordering Information:

Part Number	Size (mm)	CCT (K)	Wattage	Luminous Flux (LM)	CRI (Ra)	Luminous Efficiency (lm/w)	SDCM	Input Wattage (VAC)
PLP-6060-50W-840-CYN	595 x 595	4000K	48	≥ 4080	>95	Typical 85lm/W	<5	200-240V
PLP-30120-60W-840-CYN	295 x 1195	4000K	48	≥ 4080				
PLP-60120-60W-840-CYN	595 x 1195	4000K	60	≥ 5100				

Cyanosis panels are manufactured to order where the CCT is customisable to the clients preference.

Typical Render Index: Ra = 97.6

R1 =97	R2 =99	R3 =97	R4 =99	R5 =98	R6 =97	R7 =98	R8 =97	R9 =94
R10 =100	R11 =98	R12 =79	R13 =97	R14 =97	R15 =96			

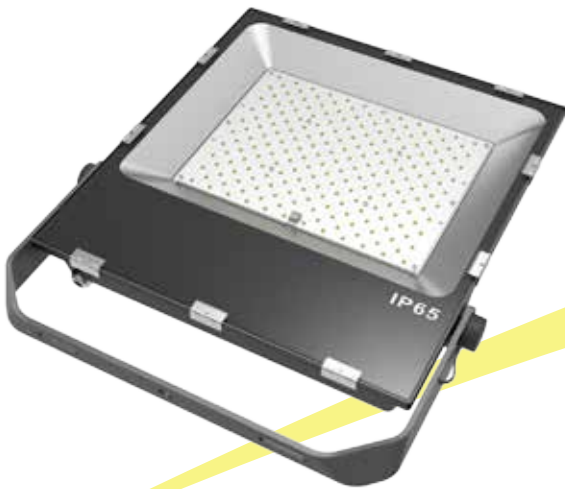
LEVEL: OUT

WHITE: ANSI_4100K



Flood Lights

Thanos Industrial



Range Features:

- 20 - 200 Watt
- 5 Year warranty
- IP65 Housing
- High quality driver (IP66/IP67 cooling gel sealed)
- Tempered glass lens
- Including 1.5m cord (200W-50W) 900mm cable for 30W-20W
- Compact size
- Thick aluminum construction
- Stainless steel hardware
- Wide beam angle 120 degree or degree focused 25/60 deg
- Phillips LED's
- Advanced thermal management
- XT for extreme duty with upgraded driver
- Great visual quality CRI>80

Product Overview

Designed for the rigors of industry. • Featuring double moisture protection in a Thick cast aluminum housing. • Featuring high brightness LEDs matched with a long-life driver sealed to withstand any moisture ingress while providing superior cooling.



thanos

flood lights



Technical Data:

	Thanos-20W	Thanos-30W	Thanos-50W	Thanos-80W	Thanos-100W	Thanos-150W	Thanos-200W
Input Power	20W	30W	50W	80W	100W	150W	200W
Replaces	200W Halogen	300W Halogen 70W M/Halide	500W Halogen 150W M/Halide	250W M/Halide	320W M/Halide	400W M/Halide	450W M/Halide
Luminous Flux	2400Lm	3600Lm	6000Lm	9600Lm	12000Lm	18000Lm	24000Lm
Dimensions	W 152	W 167	W 220	W 245	W 295	W 330	W 360
	H 216.5	H 226.5/200	H 310.5/220	H 354.3/300	H 402/345	H 430.3/365	H 400/470.3
	D 40	D 40	D 50	D 55	D 60	D 60	D 60
Weight	920 gram	1.1Kg	1.8KG	3KG	4.3KG	5.5KG	7KG
Efficacy	120Lm/W						
Beam Angle	120						
CRI	Ra≥83						
PF	>95%						
Fixture	Pure Aluminum						
Life	>50000 Hours						
Lens	Tempered Glass						
Voltage:	110~240V AC						
CCT:	Standard 5000K Optional: 3000/4000k						

Focus lens options available

Flood Lights

Solis High Power LED upto 2KW



Product Overview

Solis is designed for High Mast and High Power applications. Offering multiple beam angle configurations to suit any application. Developed using the latest technology to provide exceptional overall performance and longevity. From the latest LED's by CREE, drivers by Meanwell, superior heat-sink design and construction. All components are coated to provide exceptional environmental protection.

Tested to IP67

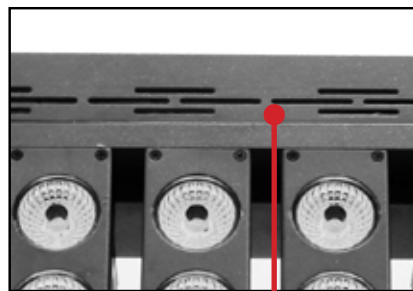
Features

- Customized USA CREE LED, 145lm/w true certified System Efficacy.
- CRI Ra80-93 Optional. Junction temperature <70°C.
- Taiwan MeanWell LED Drivers, wide AC90V~305V, PF>0.98, low THD <9%.
- Ultra-low luminous decay <5% in 5 years. L70>50,000hrs. Design lifespan greater than 80,000hrs.
- Superior 4D heat dissipation technology. Unitized module design, biggest cooling area.
- Constant current and constant voltage design, much more reliable than other LED floodlights.
- Japan optical lens, light transmittance of PMMA up to 98%.
- 10°24°38°60°90° beam angles and excellent uniformity.
- High strength structure coated with corrosion resistant polyester powder, real anti-corrosion.
- Optical design, low UGR. Non-flickering for slow-motion image required for HDTV broadcasting.
- Intelligent dimming system. 0-10V, 1-10V, Triac and DALI dimming models are available.
- CE RoHS TUV GS SAA ETL FCC DLC and IP67 approved, 5 years warranty.
- Widely used in stadium, sports field, tunnel, high mast lighting, light tower, ports.

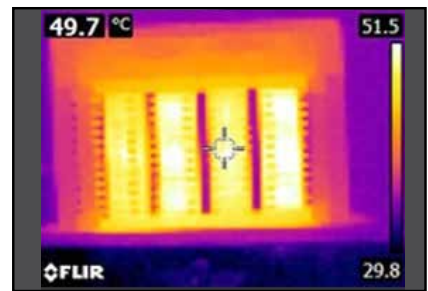
Material



Aluminum alloy heat-sink with electrophoresis treatment



Aluminum alloy housing with electrostatic spraying



Environment Temperature: 30°C

Solis

flood lights

2000W

Technical Data:

Input Voltage	90-305 VAC, 50/60 Hz
NRUSH CURRENT(Typical)	COLD START 600A(t width=570s measured at 50%I peak)at 230VAC
LEAKAGE CURRENT	<0.75mA/277VAC
POWER FACTOR(Typical.)	PF>0.95/230VAC at full lead
LED Light Source	CREE X lamp
LED Qty	240PCS
LED Power	2000W
Total System Power	2025W
Power supply	Mean Well
Driver Qty	8PCS
Total System Luminous Efficiency	149lm /W
LED Initial Luminous Flux	260000 LM
Illuminance Uniformity	0.8
Color Temperature	2700K, 3000K, 3500K, 4000K, 5000K, 5700K, 6500K
Color Rendering Index	80+ /90+
Light Distribution	Asymmetric / Rectangular
Beam Angle	10°/24°/38°/60°/90°/120°
LED Junction Temperature	≤70 (@ Ta=25)
Working Temperature	-40 +65
Storage Temperature	-40 +65Best 25
IP Rating	IP67
Net weight	60Kg
Life-span	>80,000H
Shell Color	Black/Silver/Grey

Talk to us today about the complete range and your custom requirements.

web: www.lumnz.co.nz | email: gerhard@lumnz.co.nz

High Bay - Low Bay LED Lighting



Product Overview

Maxi Light is highly adaptable. • Maxi Light can be used for Highbay/Lowbay and Flood Light applications. • Supporting many configurable options adapted to client's requirements right here in New Zealand.



Lens Option



Flood Light



High Bay

Product Solutions

- We offer other size LED Highbay solutions.
- Please enquire if you have any requirement outside of the above solutions.
- Linear Highbay lighting also available



Polycarbonate
Diffuser



Aluminum
Reflector



high & low bay

Technical Data:

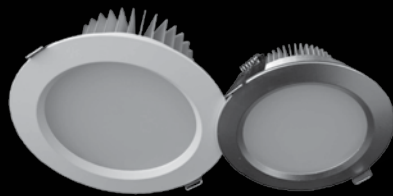
Model Number	Maxi-100W	Maxi-150W	Maxi-200W	Maxi-240W	Maxi-300W	Maxi-400W
Input Power	100W	150W	200W	240W	300W	400W
Luminous Flux	12000lm	14400lm	24000lm	31200lm	39000lm	52000lm
Replaces	250W Metal Halide	400W Metal Halide	400W Metal Halide	450W Metal Halide	750W Metal Halide	1KW Metal Halide
Dimensions	Diameter 220	Diameter 280	Diameter 280	Diameter 280	Diameter 360	Diameter 360
	H 220	H 240	H 240	H 280	H 260	H 260
Weight	4.5Kg	5.5Kg	6.5Kg	6.5Kg	7.8Kg	8.5Kg
Efficacy Entire Fixture	130lm/Watt					
Beam Angle	120° / 90° / 60°					
CRI:	Ra≥80					
Power efficiency:	>93%					
Fixture Material:	1070 Pure Aluminum Cold Forged Heat-sink Anodized					
Lens	Tempered Glass / Polycarbonate/Optical Lens					
Voltage:	110~240V AC					
CCT:	Standard 5000K Optional: 3000 / 4000k					

Additional Services

Specialized Products

- 
- **Lighting Design / Simulation**
 - **Customized Solutions**
 - **Project Specific Manufacturing & Sourcing**
ATEX LED – Ultra High CRI etc.
 - **Hi Mast Applications up to 2000W / 261 300 Lumen per fixture**
 - **Sports field lighting**
 - **Light Weight Hi-Power Applications up to 44000Lumen@5Kg**
 - **Street Lighting**
 - **Food & Beverage lighting**
 - **Carpark / Billboard Lighting**
 - **Adapted LED design to accommodate special requirements like High Temperature or extreme environments.**
 - **IES Files available**





LED Downlights • Ultra Slimline Linear • LED Batten Traditional T5/8
Plana LED Panels • Flood Lights • High Bay - Low Bay



284 Patumahoe Road,
Pukekohe Auckland

Mobile: +64 21 57 99 99

Office: +64 9 215 2141

email: gerhard@lumnz.co.nz

